

2024-12-05 L'acte européen sur l'accessibilité : impacts normatifs en France

# CEN/CLC/JTC 11

## Accessibility in the built environment



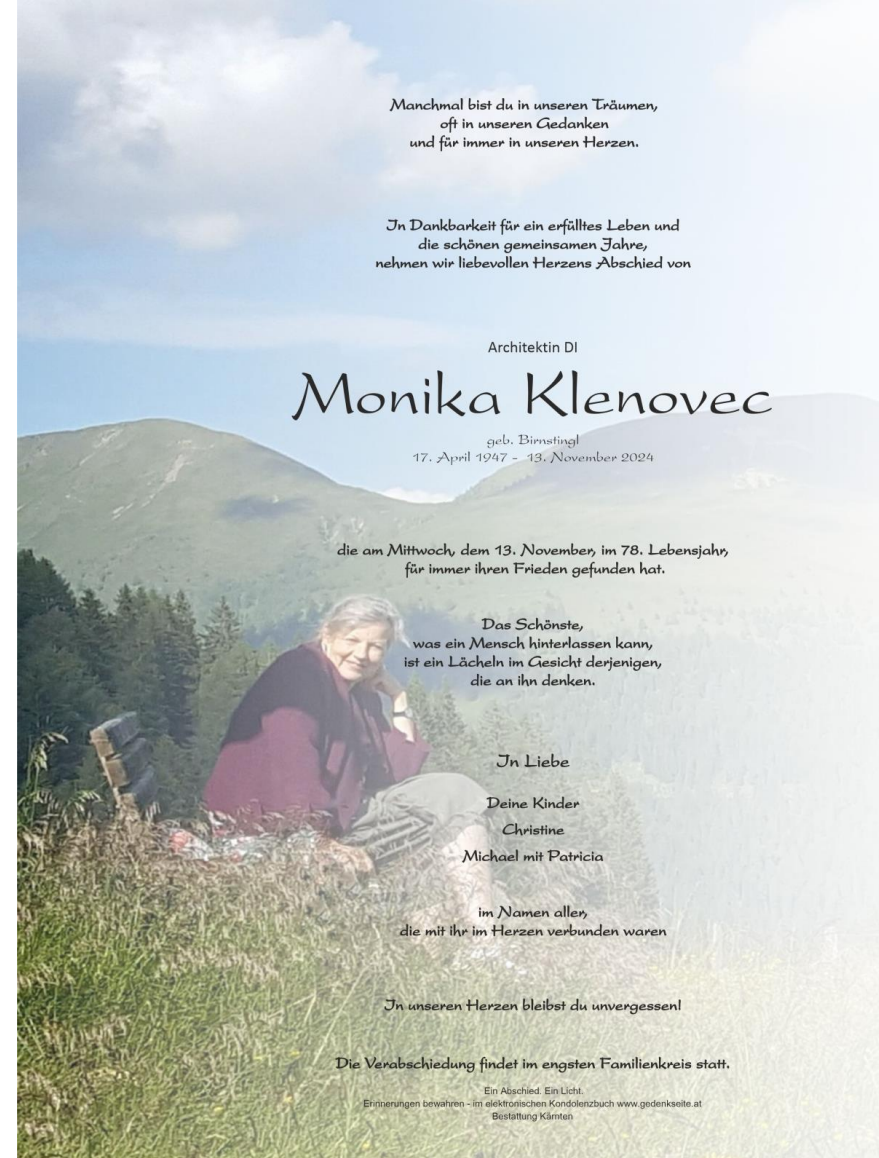
**UNE**

**Fernando Machicado, UNE. Secretary of CEN/CLC/JTC**

**11**

**Accessible**  
centre **EU**

# In memoriam of Monika Klenovec



Manchmal bist du in unseren Träumen,  
oft in unseren Gedanken  
und für immer in unseren Herzen.

In Dankbarkeit für ein erfülltes Leben und  
die schönen gemeinsamen Jahre,  
nehmen wir liebevollen Herzens Abschied von

Architektin DI  
**Monika Klenovec**  
geb. Birnstingl  
17. April 1947 - 13. November 2024

die am Mittwoch, dem 13. November, im 78. Lebensjahr,  
für immer ihren Frieden gefunden hat.

Das Schönste,  
was ein Mensch hinterlassen kann,  
ist ein Lächeln im Gesicht derjenigen,  
die an ihn denken.

In Liebe  
Deine Kinder  
Christine  
Michael mit Patricia

im Namen aller,  
die mit ihr im Herzen verbunden waren

In unseren Herzen bleibst du unvergessen!

Die Verabschiedung findet im engsten Familienkreis statt.

Ein Abschied. Ein Licht.  
Erinnerungen bewahren - in elektronischem Kondolenzbuch [www.gedenkseite.at](http://www.gedenkseite.at)  
Bestattung Klammern

# 1. Accessibility of the built environment and the EAA

Directive 2019/882 on the accessibility requirements for products and services (EAA):

## Article 4. Accessibility requirements

4. **Member States may decide**, in the light of national conditions, that the built environment used by clients of services covered by this Directive shall comply with the accessibility requirements set out in **Annex III**, in order to maximise their use by persons with disabilities.

Article 4.4 only applies to services covered by the EAA

# EAA Annex III



In order to maximise the foreseeable use in an independent manner by persons with disabilities **of the built environment in which a service is provided and which is under the responsibility of the service provider**, as referred to in Article 4(4), the accessibility of areas intended for public access shall include the following aspects:

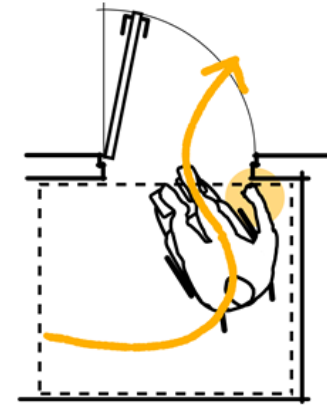
- (a) use of related outdoor areas and facilities;
- (b) approaches to buildings;
- (c) use of entrances;
- (d) use of paths in horizontal circulation;
- (e) use of paths in vertical circulation;
- (f) use of rooms by the public;
- (g) use of equipment and facilities used in the provision of the service;
- (h) use of toilets and sanitary facilities;
- (i) use of exits, evacuation routes and concepts for emergency planning;
- (j) communication and orientation via more than one sensory channel;
- (k) use of facilities and buildings for their foreseeable purpose;
- (l) protection from hazards in the environment indoors and outdoors.

### ► 9.3.2 Side clearance and manoeuvring space at doors

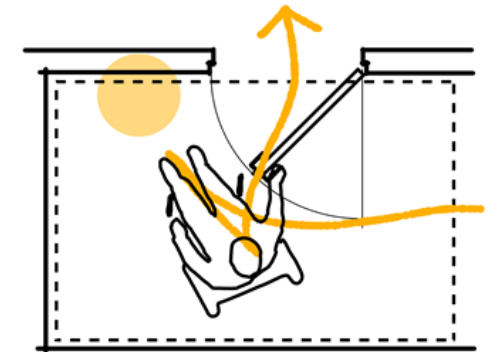
The following requirements apply:

- a) **Adequate** manoeuvring space shall be provided between the leading edge of a door and a wall that is perpendicular to the doorway to allow opening of the door by a person using a wheeled mobility device or a walking frame.
- b) Side-hinged doors shall have **adequate** side clearance on the hinged side to enable a person using a wheeled mobility device to manoeuvre and swing the door open.
- c) **Adequate** clear space shall be available on either side of the doors to enable persons using wheeled mobility devices to access the door controls and pass through.

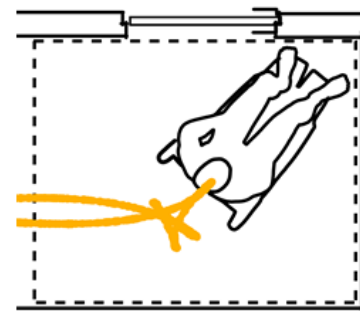
See also examples of different door types and manoeuvring space in Figure 61 a), b), c) and d).



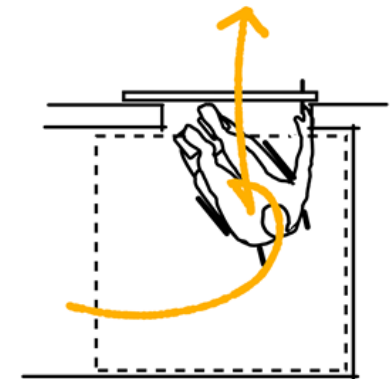
a) Example of single leaf swing door opening away from user



b) Example of single leaf swing door opening towards user



c) Larger manoeuvring space for turn around with mobility device



d) Example of sliding door operation

## 2. EN 17210 revision

### Accessibility and usability of the built environment - Requirements and recommendations

#### Standardisation Request M/587 launched 2022-09-15:

- “Existing standard EN 17210:2021 covering accessibility requirements of the built environment shall be revised. The **harmonised** standard shall describe where needed in more detail the functional solutions linking where feasible to technical solution for accessibility to ensure conformity with Annex III of Directive 2019/882.”
- Besides: “The requirements set out in EN 17210 and EN 301 549 should be aligned avoiding contradictions”.

### Requirements given in harmonised standards

The requirements shall be objectively verifiable. Only those requirements which can be verified shall be included.

# Approach of the revision

- ▶ Only the parts affected by the EAA will be revised
- ▶ Main sources for the technical requirements:
  - CEN/TR 17621 (N24).
  - ISO 21542
- ▶ All new requirements to fulfill the EAA will be given in a new Normative Annex
- ▶ That Annex is structured according to Annex III of the EAA
- ▶ Ranges of values

# Example of the new Annex

## A.6.3 Easy manoeuvring in paths in vertical circulation

### a) Clear manoeuvring space:

- 1 500 mm diameter at bottom and top of ramp / stair (10.1.6 a / 10.2.5 a) and at intermediate landings with changes in direction  $\geq 10\%$ ,
- 1 200 mm minimum length of intermediate landings equal to the width of the ramp / stair (10.1.6 b / 10.2.5 b),
- 1 500 mm diameter in front of the lift car entrance (10.4.2 b) / vertical and inclined lifting platforms (XXX) / escalators and moving walks (XXX)

### a) Minimum inner dimensions of lift cars / lifting platforms:

- lift car at least 1 100 mm x 1 400 mm (10.4.3 a), see EN 81-70 (table 3, car type 2),
- vertical lifting platform 1 000 mm x 1 400 mm, see EN 81-41,
- inclined lifting platform 850 mm x 1 250 mm, see EN 81-40.



# Planning

Month	Estimated calendar date	Task
0	May 2024	Grant Agreement signature
0 to 1	May 2024	Public Call for Tender
1 to 2,5	June 2024 to Mid-July 2024	Selection process of the Project Team
0 to 2,5	May 2024 to Mid-July 2024	CEN/CLC/JTC 11 initial works on 1st draft
3	End July 2024	CEN/CLC/JTC 11 Virtual meeting: present Project Team members and first advances
3 to 5	End July 2024 to end Sept 2024	Project Team works on the 1st draft (2 months)
5	End Sept 2024	CEN/CLC/JTC 11 virtual meeting: present First Working Draft (FWD)
5	End Sept 2024	First Working Draft (FWD)
5 to 7	October 2024 to end November 2024	European Commission comments on FWD (2 months)
5 to 7	October 2024 to end November 2024	CEN/CLC/JTC 11 comments on FWD (2 months)
7 to 9,5	December 2024 to mid-February 2025	Project Team: Amend FWD according to comments (2,5 months)
8,5	January 2025	CEN/CLC/JTC 11 face-to-face meeting: solve comments on FWD
9,5	Mid-February 2025	Draft of public enquiry (ENQ draft) (2nd draft)
9,5	Mid-February 2025	Dispatch draft for public to CEN-CENELEC Management Centre (CCMC) (3,5 months)
9,5 to 11,5	Mid-February 2025 to mid-April 2025	European Commission comments on ENQ draft (2 months)
13 to 16	June 2025 to end August 2025	Enquiry vote (3 months)
16 to 18	Sept 2025 to end October 2025	Project Team works on 3rd draft (2 months)
18,5	2025-11-15	3rd draft of prEN 17210.

## Get involved and help us to build a more inclusive Europe

If you wish to join our community and participate in our activities, please follow us in our website and social media.



[@EU\\_Social](#)



[EU Social](#)



[Accessible EU Centre](#)



[Social Europe](#)

### Website:

[www.AccessibleEUCentre.eu](http://www.AccessibleEUCentre.eu)

### Email:

[accessibleeu@fundaciononce.es](mailto:accessibleeu@fundaciononce.es)

Join our community of practice!

